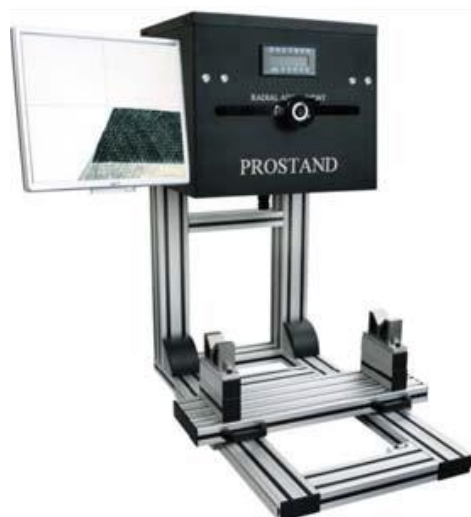


## AMS | ProStand HD



ProStand HD is a system for measuring, calibrating and cataloging woodworking machinery cutterheads. The ProStand system hardware is a two-axis cutterhead setup stand that allows an operator to digitally measure cutterhead radius, axial position, length of arcs, arc center points, arc radius, knife alignment and more. It makes non-contact, digital measurements using a color CCD camera coupled to a magnification lens, a high resolution 17" LCD color monitor and ProStand digital read out.

### TECHNICAL SPECIFICATION

<b>Size</b>	40H x 36W x 36D inches (
<b>Weight</b>	145 lbs. (Standard set up)
<b>Power Requirements</b>	110v or 220v
<b>Maximum cutter radius</b>	190 mm (7.5 inches)
<b>Maximum axial measurement</b>	radius 380 mm (15 inches)

## STANDARD MACHINE FEATURES:

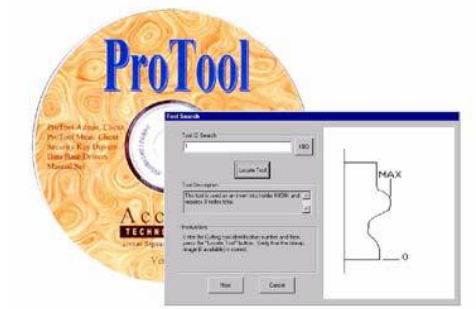
### ProStand Components

- Color CCD camera with 20+ magnification lens
- Integrated LCD monitor
- ProTool database software
- SPC, RS 232 and printer outputs
- Adjustable V-blocks to work with your grinding shaft

### ProStand Features

- Sliding carriage ensures operator safety during loading and unloading of large and heavy cutters.
- 20x+ Tool Magnification allows for inspection of knife edge grind and quality (the full color image better defines the edge and - offers more detail - than shadow-casting systems).
- Non-Contact = no mechanical measurement ambiguity.
- Dual Measurements: With ProStand digital readout, you can measure in absolute mode, switch to incremental mode for relative measurements and return to the absolute mode with no loss of measurement or accuracy.
- Digital Read Out performs mathematical calculations.
- .01mm Resolution and +/- .07mm Accuracy.
- 1 year warranty

### ProStand Software ProTool



ProTool is a software program that provides measurement, calibration and cataloging for cutting tools. Tooling measurements are supplied from the ProStand and are interfaced to ProTool via a ProMux-3. ProTool records tooling information such as feature dimensions, when and where the tooling was purchased, what machines it has been run on, the last date of sharpening (and how the tool measurements changed) and other pertinent tooling details.

### **PC Requirments for the ProTool Software**

- Pentium 100 or greater
- Windows 95/98/2000 Pro/XP/Vista
- Floppy Disk Drive
- CD Drive capable of reading CD-R disks
- 32 MB RAM
- 5 MB Hard drive space
- Serial Port
- Network Interface Card (NIC; only required if running ProTool with client-server environment)

The machine conforms to CE safety regulations

All prices are exclusive of VAT

Prices Quoted are firm for acceptance with 30 days

**Delivery:** Availability will be confirmed at the time of ordering.

**Payment Terms:** 30% deposit with order, 70% prior to dispatch from Leicester